

PART OF THE NORTH 1/2 OF SEC. 24, T.6N., R.1E., S.L.B. & M.  
**VALLEY-LAKE ESTATES NO. 3**

IN WEBER COUNTY

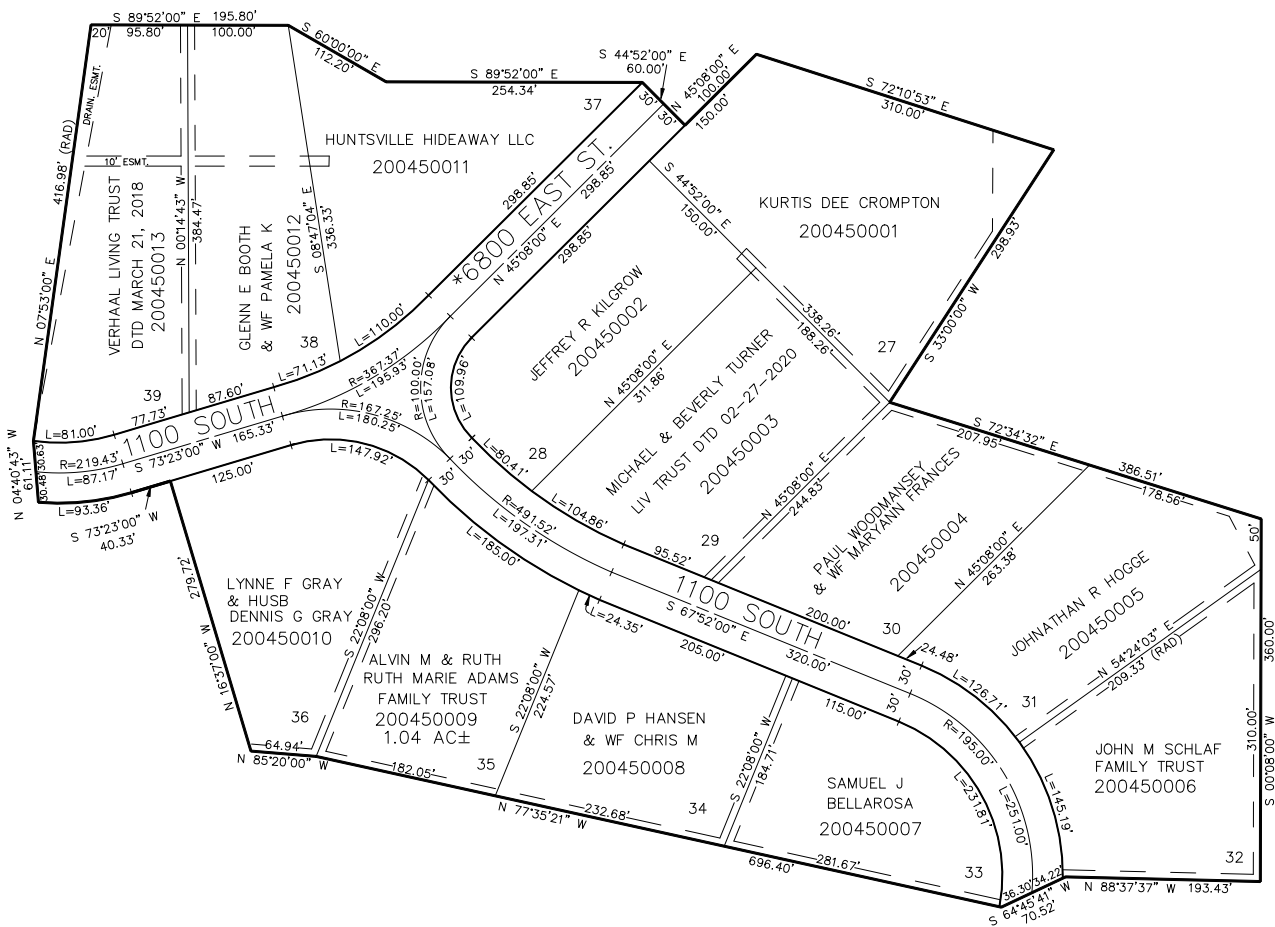
TAXING UNIT: 58

SCALE 1" = 100'

SEE PAGE 38

SEE PAGE 36

SEE PAGE 36



SEE PAGE 36

7' UTILITY & DRAINAGE EASEMENTS  
EACH SIDE OF PROPERTY LINES AS  
INDICATED BY DASHED LINES EXCEPT  
AS OTHERWISE SHOWN.

FOR COMPLETE ENG DATA SEE  
ORIGINAL DEDICATION PLAT IN  
BOOK 16, PAGE 24 OF RECORDS.

\* STREET NAME CHANGE  
#1409443 1809-11  
30-MAY-96